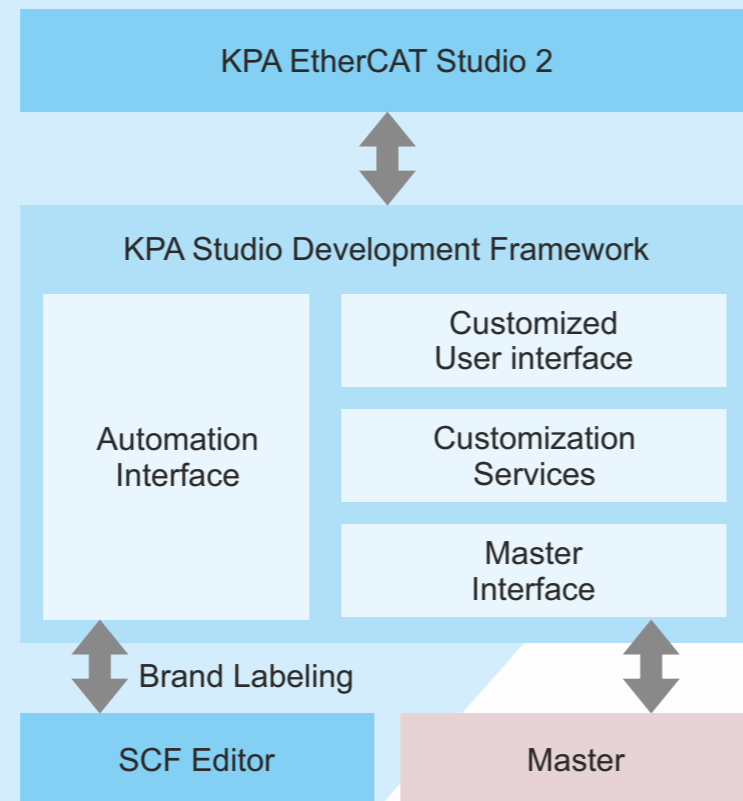
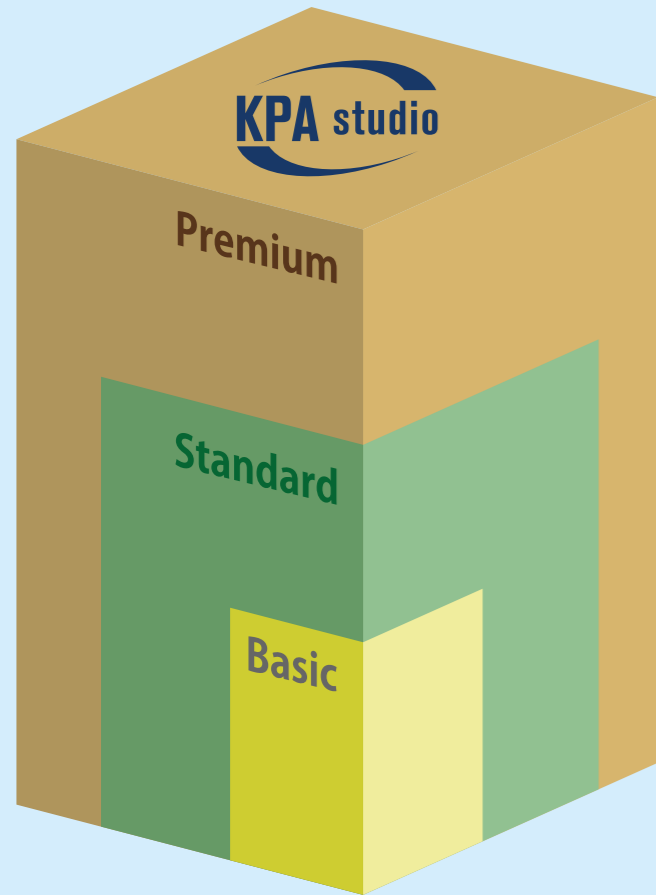


KPA EtherCAT Studio 2 based on SDF

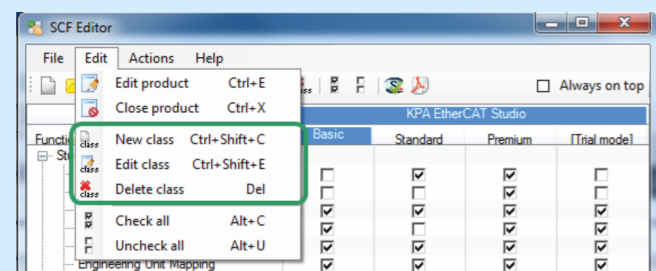
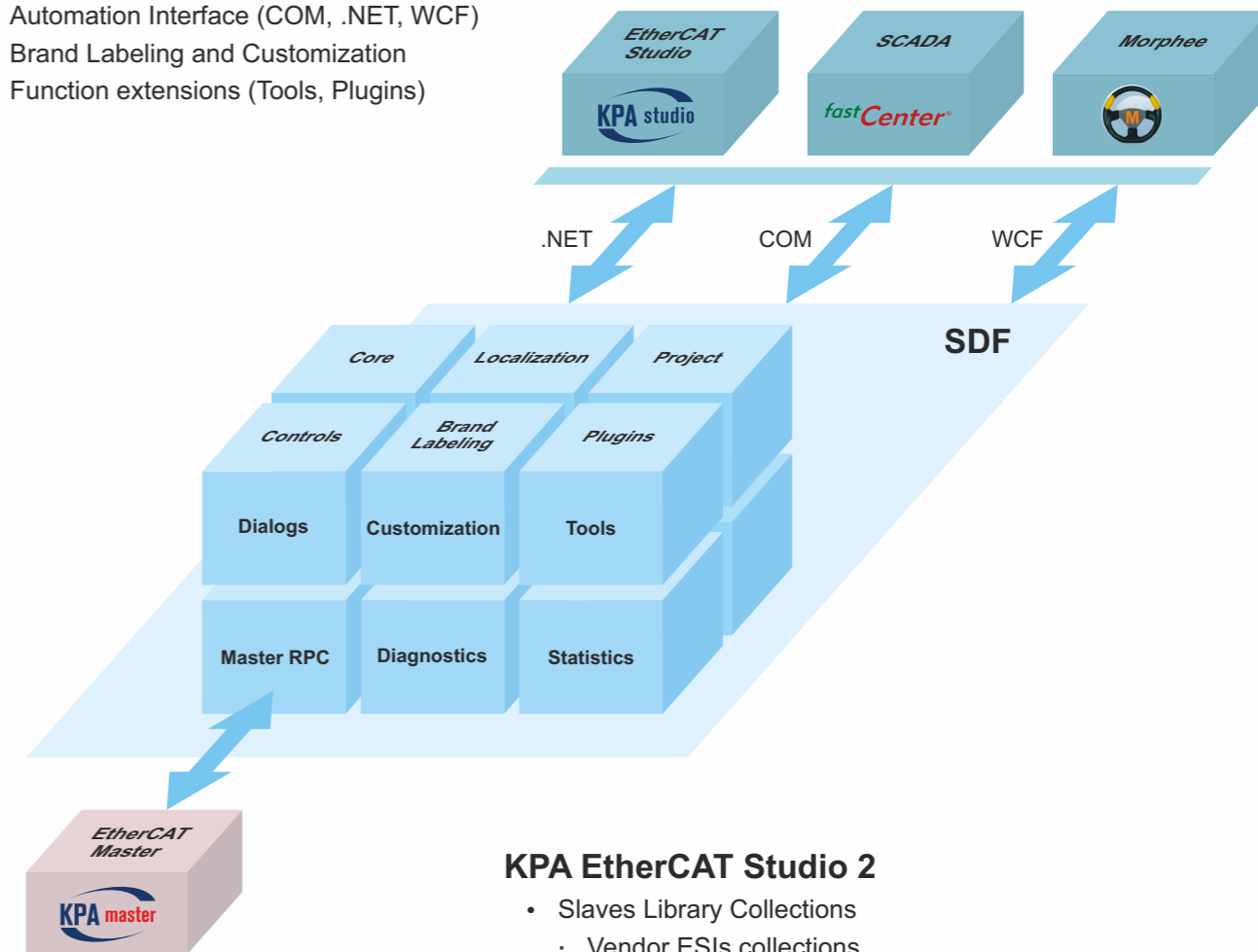


KPA EtherCAT Studio 2



KPA EtherCAT Studio Development Framework (SDF)

- Core Interface (Business objects)
- User Interface (Controls, Dialogs)
- Automation Interface (COM, .NET, WCF)
- Brand Labeling and Customization
- Function extensions (Tools, Plugins)



Studio classes **Basic, Standard and Premium** are defined using SCF Editor (SDF Customization File).

Procedure:

- SCF Editor used for functionality definition
- Brand Labeling
- License specifies the permitted class

KPA EtherCAT Studio 2

- Slaves Library Collections
 - Vendor ESIs collections
 - Customizable ESI collection (uESI)
 - Custom Properties (Attributes View, Find and Replace)
- Runtime Data-Logger (Oscilloscope style - Master 2)
- Tasks and Sync Units
- Extensible Process Image (Master 2)
 - Custom PI Variables
 - Statistics/Diagnostics in PI
 - Mailboxes services in PI
- Slave development tools
 - ESI/EEPROM Editor
 - OD Editor
- Master Events (Master 2)

koenig-pa GmbH
Im Talesgrund 9a
91207 Lauf a.d. Pegnitz
Germany
www.koenig-pa.de

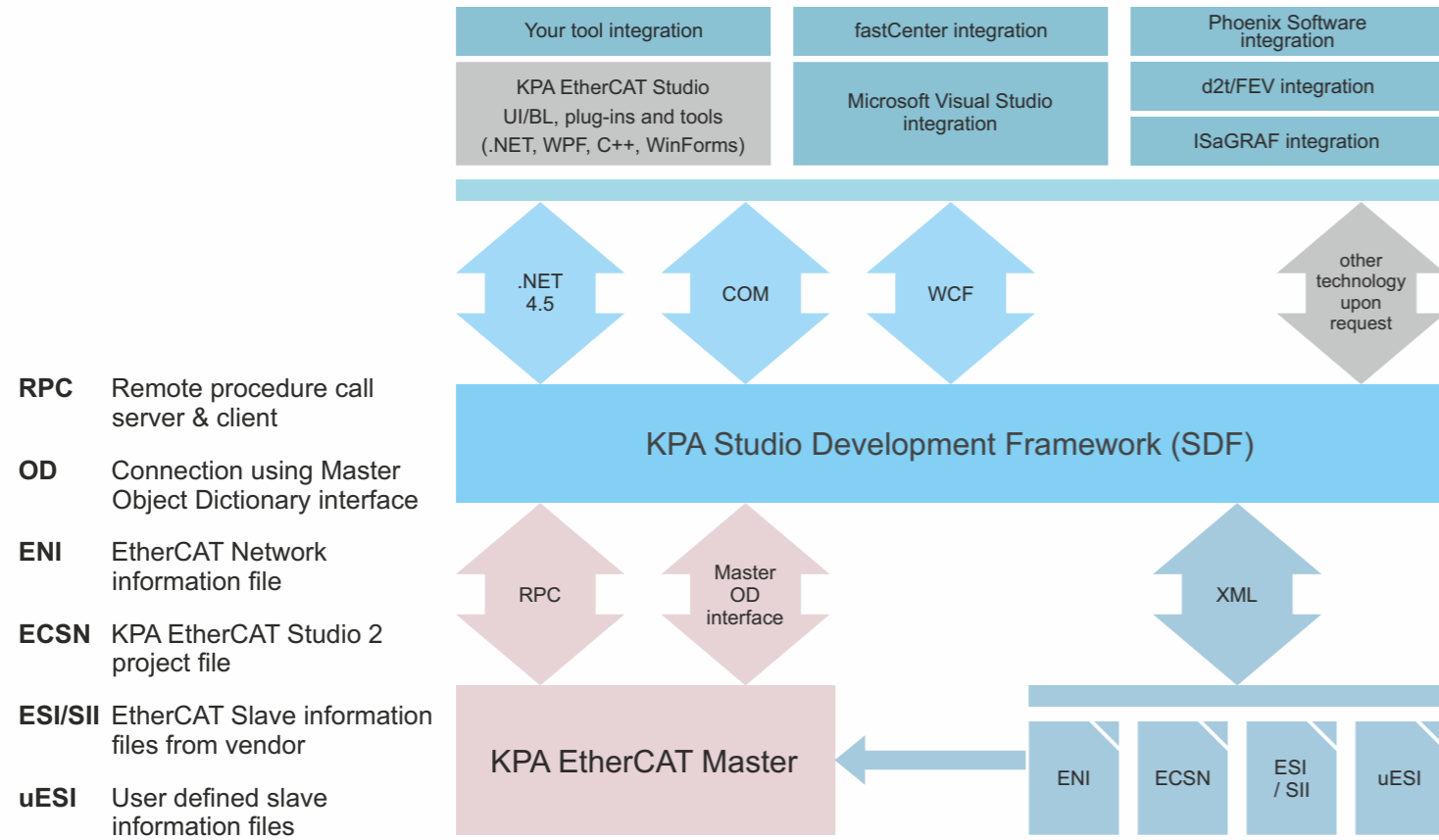
Contact
email: sales@koenig-pa.de
tel.:+49 9128 725 614 (Feucht)
tel.:+49 9128 725 631 (Feucht)
fax.:+49 9128 725 407 (Feucht)

koenig-pa GmbH Quality Management System
certified according to DIN EN ISO 9001:2015
(initial certification in 2008)

Copyright © 2007-2017 koenig-pa GmbH
All rights reserved
EtherCAT® is registered trademark and patented technology,
licensed by Beckhoff Automation GmbH, Germany

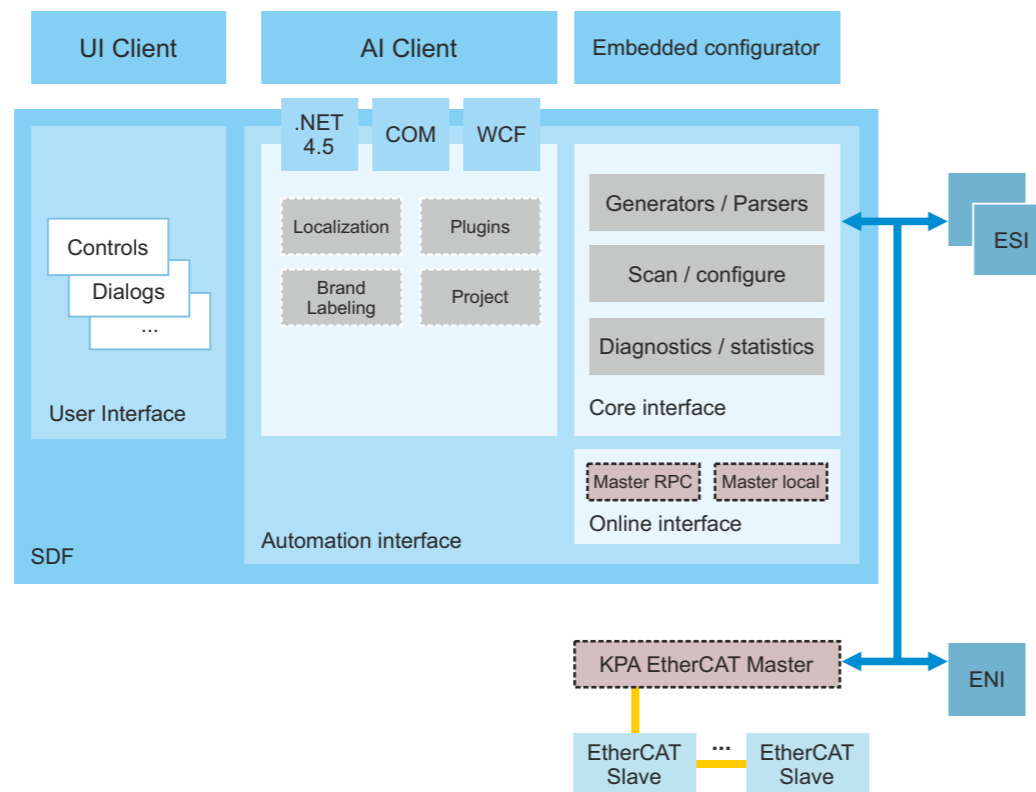


Architecture and integration

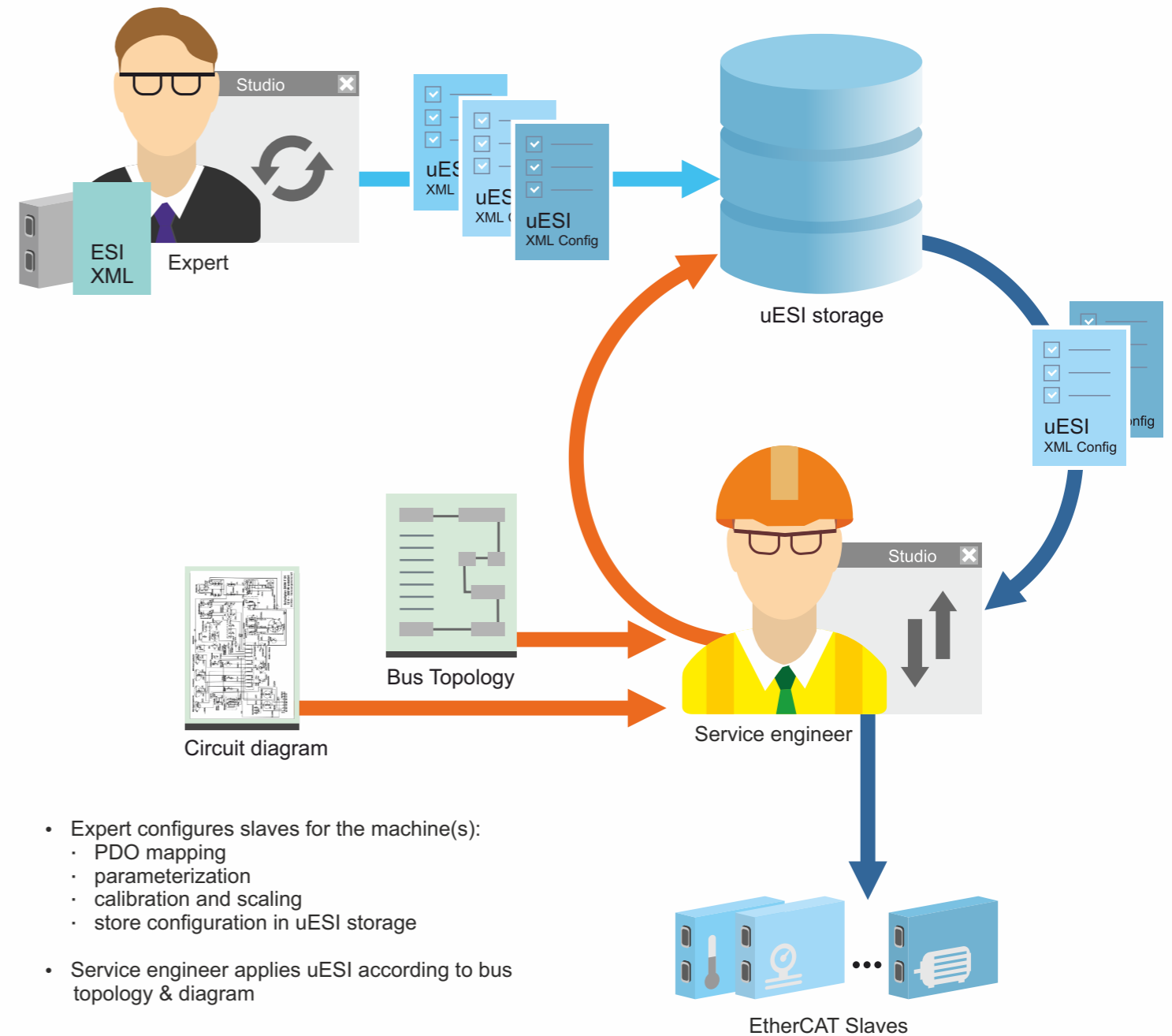


Components

- Core Objects
 - Master
 - Slave
 - Channel/PDO
- Parsers and generators
 - uESI/ESI/SII
 - ECSN
 - ENI
- Automation interface (AI)
 - COM
 - WCF
 - .NET
- User interface (UI) components
 - master controls
 - slave controls
 - watch/trace controls
 - project tree control
 - chart controls
 - OD control



uESI - User Slave Library



Runtime Data-Logger

